

# MECTRON VET SCALER

## COMPACT EFFICIENCY FOR VETERINARIAN USE

POWERFUL SCALING, RELIABLE TECHNIQUE, EASY HANDLING

mectron s.p.a., via Loreto 15/A, 16042 Carasco (Ge), ITALY, tel +39 0185 35361, fax +39 0185 351374, www.mectron.com, mectron@mectron.com

### MECTRON PIEZO ULTRASOUND TECHNOLOGY

Thanks to mectron piezo technology, the new vet scaler stands for high precision ultrasound. The built-in Feedback-System monitors performance and adjusts it when needed within only a few hundredths of a second.

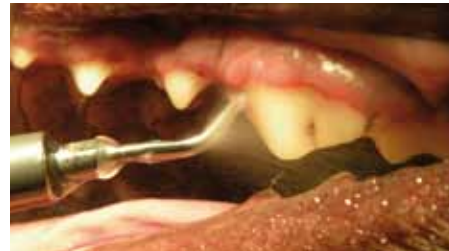
In any challenge the new vet scaler offers always the optimum performance. A definite advantage in terms of efficiency and comfort of treatment.



mectron

medical technology

# MECTRON VET SCALER HIGH-PRECISION ULTRASOUND



\* pictures by courtesy of Dr. Andrea Chiuminatto, Genova

→ supra- and subgingival scaling in a dog with mectron vet scaler and insert S1V

## ERGONOMICS

- handpiece fully sterilisable
- optimum handpiece coupling with protection for preventing incorrect insertion



- water connection enables pressure values between 1 to 6 bars
- water filter prevents the passage of suspended particles and is easy to clean without needing any tools



- Automatic Protection Control interrupts power in case of wear or incorrect fitting of an insert to the handpiece or any handpiece or handpiece cord defects. Delivery of the liquid is stopped automatically within less than 0.1 seconds and the flashing LED signals „check“.
- easy to clean, plain housing
- control with few push-buttons



**APC**  
on board



## INSERTS

→ The most common scaling inserts for veterinarian use (S1V and S6V) are very cost effective. All the other Mectron ultrasound inserts, for a total of 41 tips, are available for the new vet scaler and cover an extraordinary variety of clinical indications. Their nitro-titanium coating on the surfaces makes them tougher than traditional ultrasound inserts.

## VET SCALER EQUIPMENT

- 1 handpiece
- 2 inserts (S1V and S6V)
- 1 dynamometric wrench K6
- 1 footswitch
- 1 water line
- 1 water filter